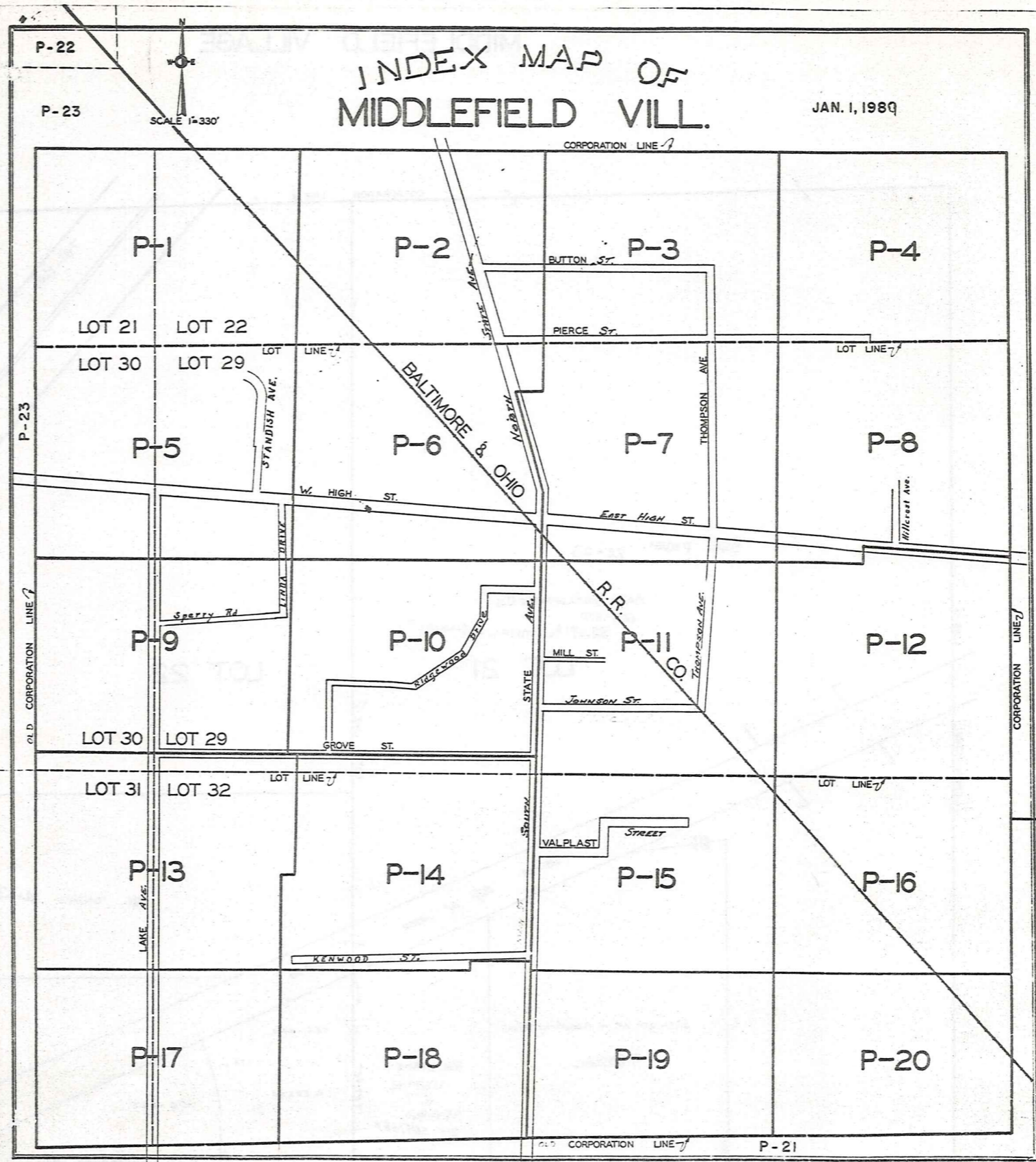


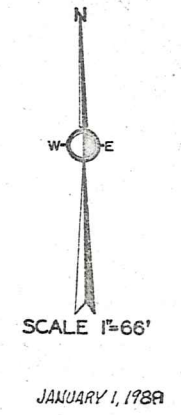
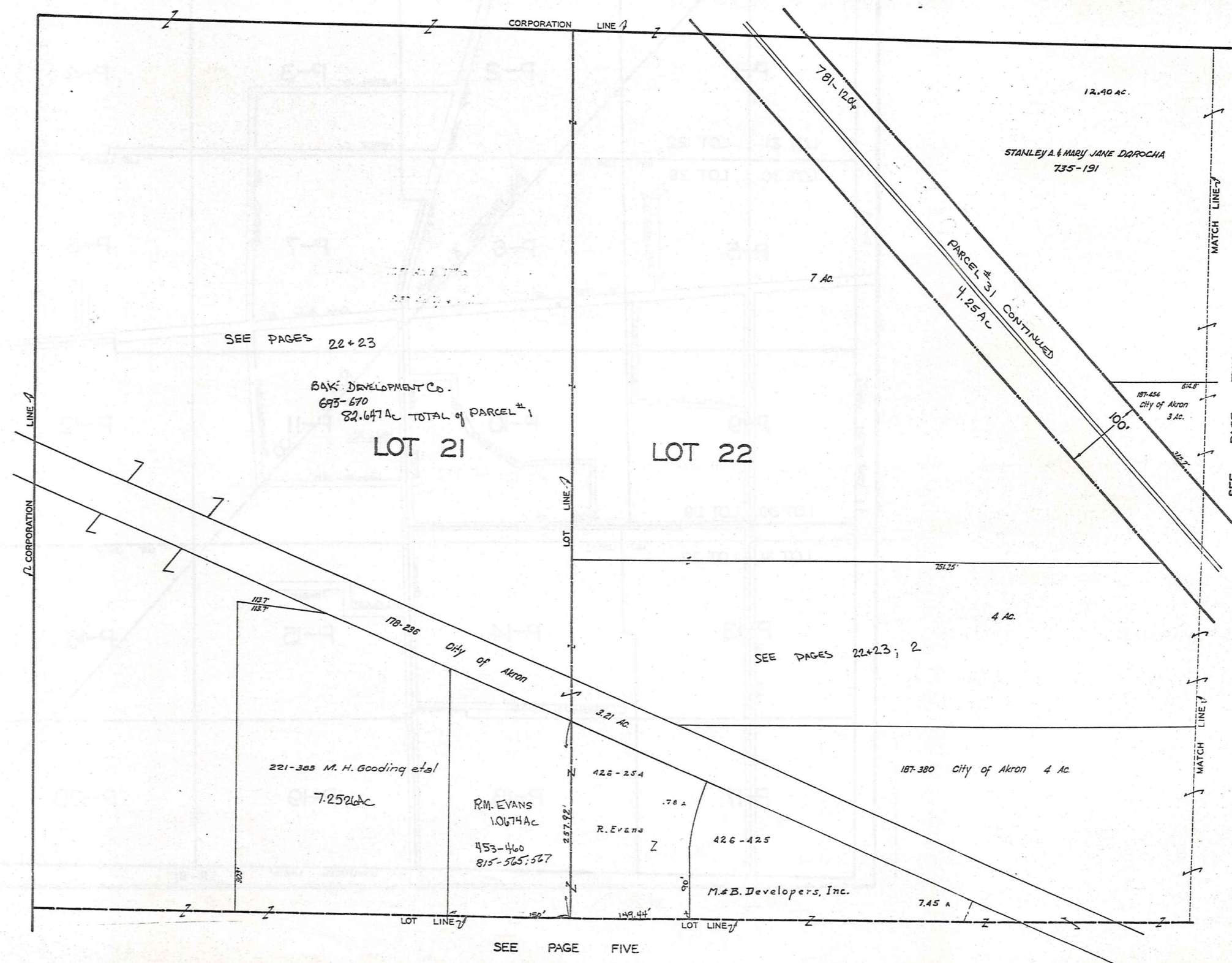
# INDEX MAP OF MIDDLEFIELD VILL.

JAN. 1, 1980

SCALE 1"=330'



MIDDLEFIELD VILLAGE



SEE PAGE TWO

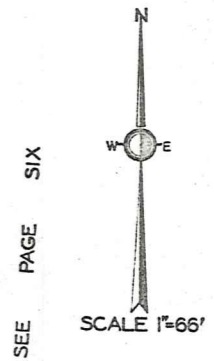
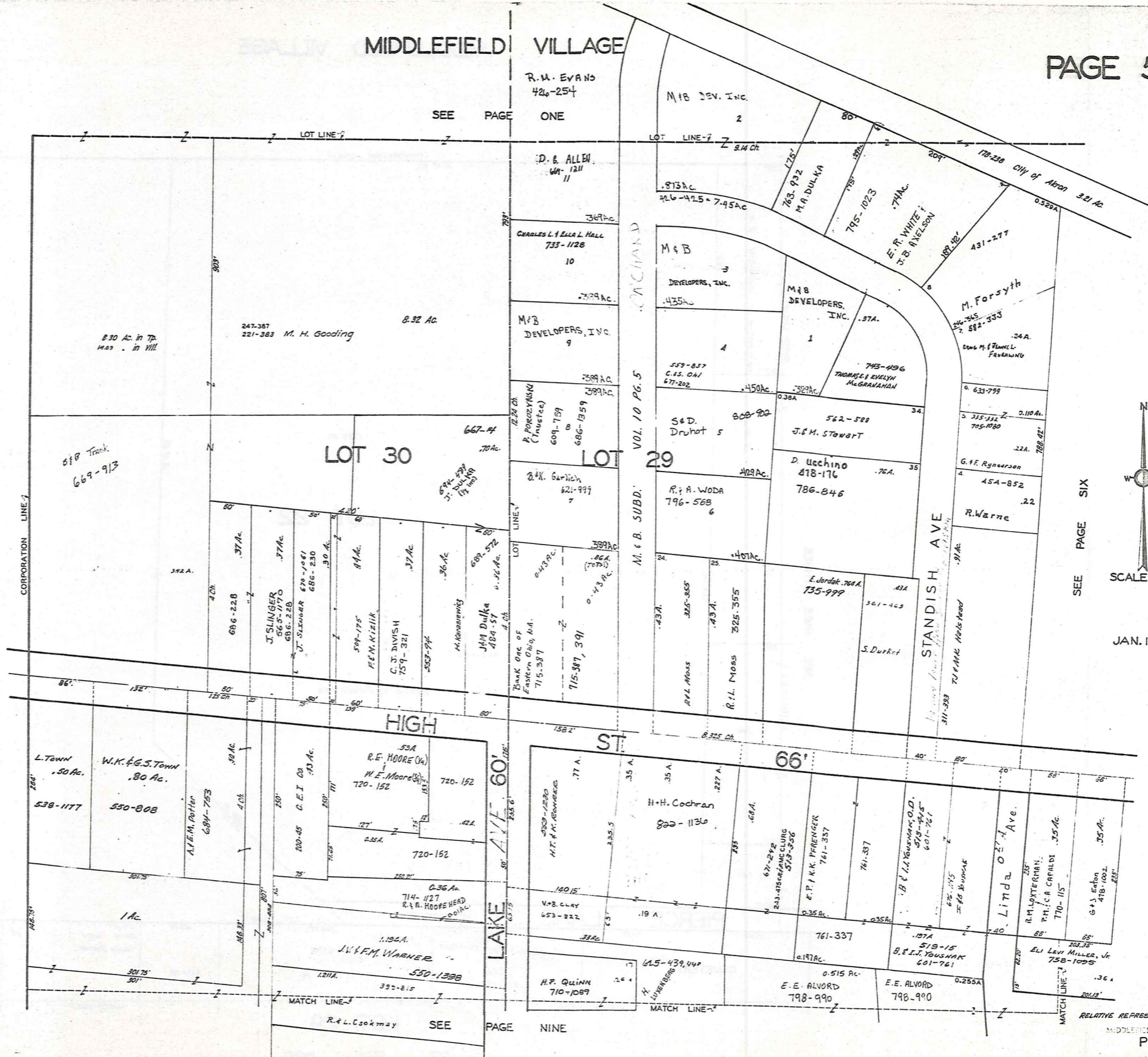
SEE PAGE FIVE







MIDDLEFIELD VILLAGE

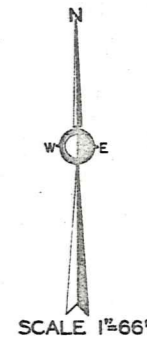
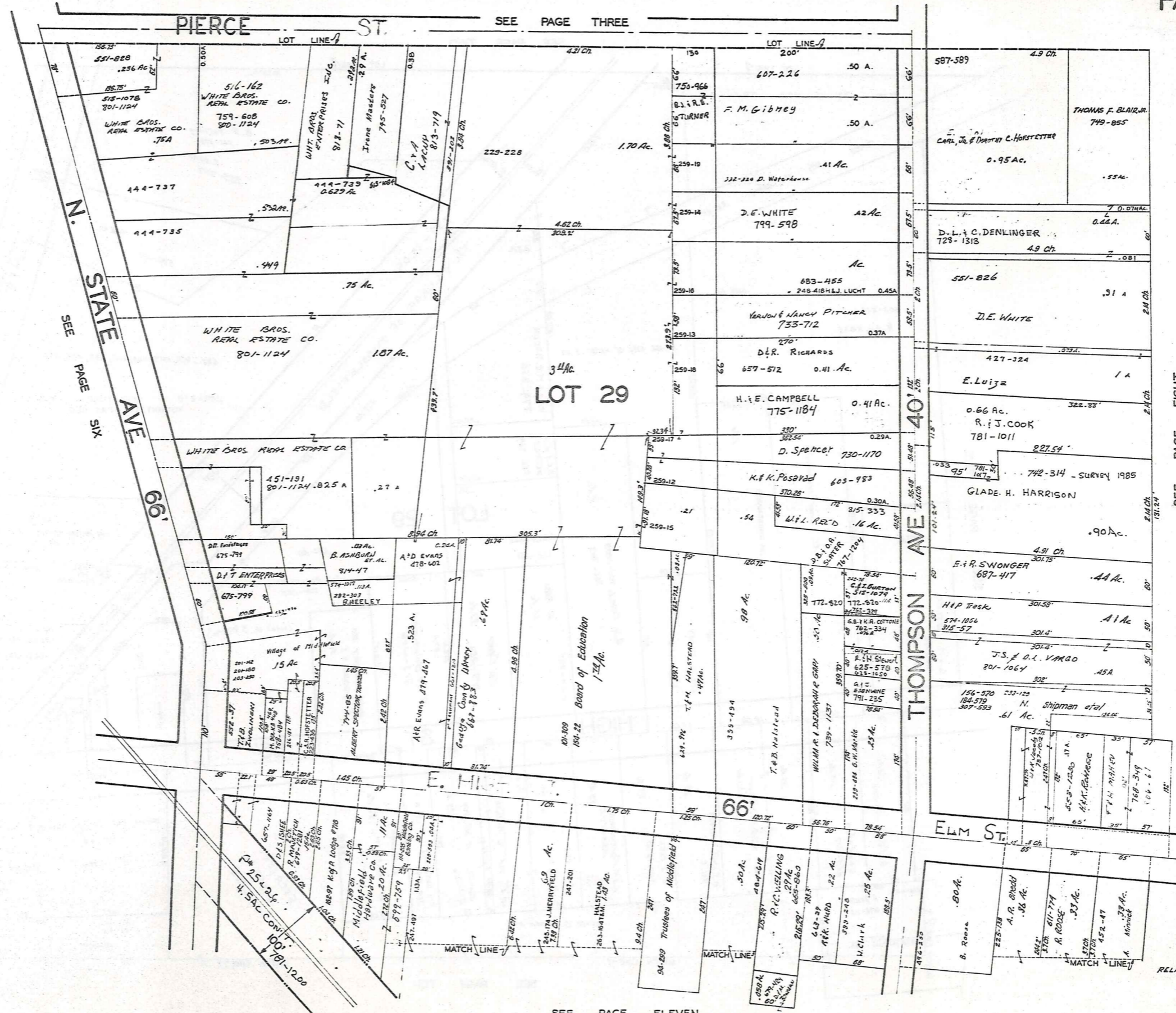


JAN. 1, 1969

RELATIVE REPRESENTATION  
MIDDLEFIELD VILLAGE  
PG. 5



MIDDLEFIELD VILLAGE

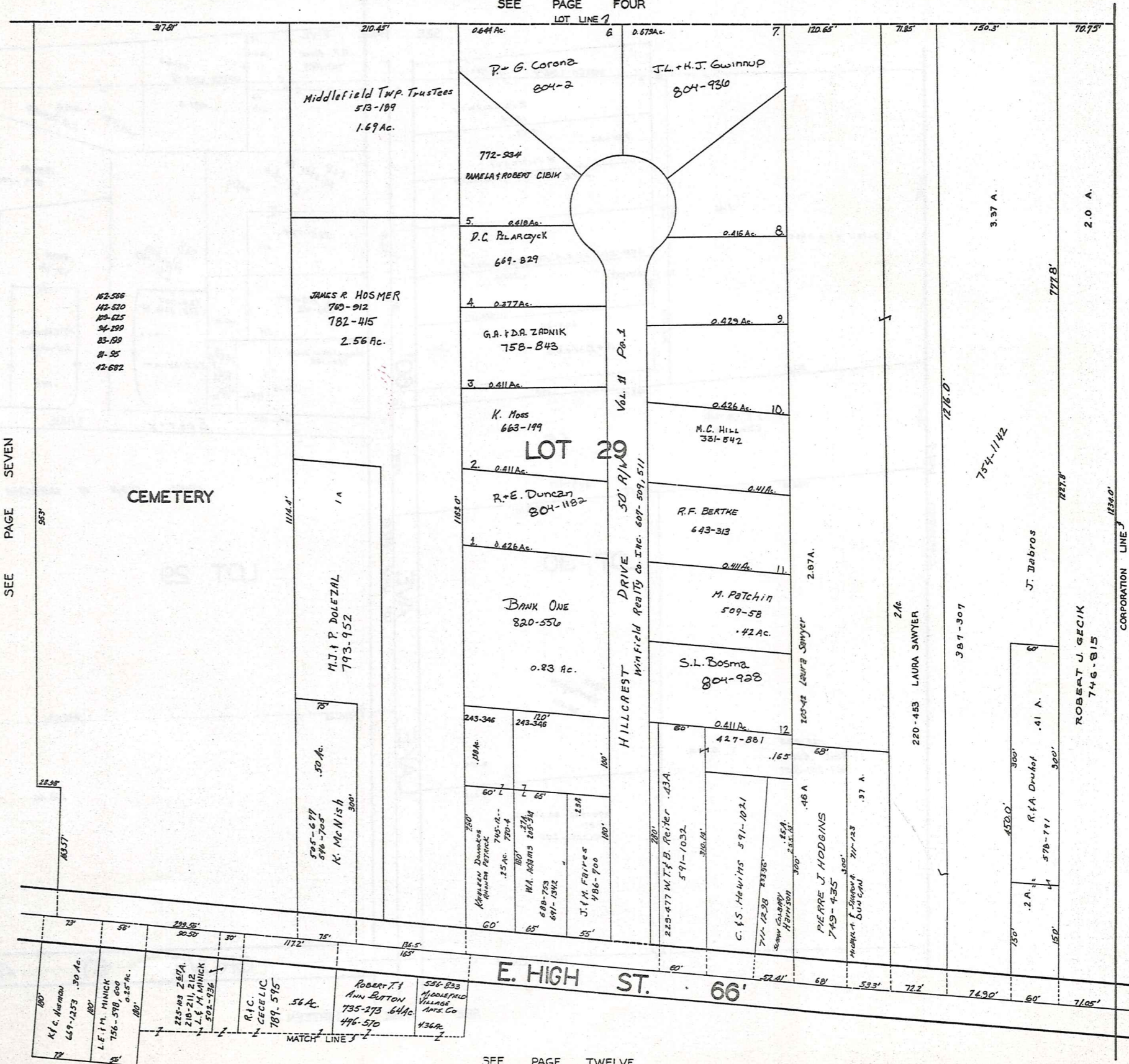


SEE PAGE ELEVEN

JANUARY 1, 1959  
 RELATIVE REPRESENTATION  
 MIDDLEFIELD VILLAGE  
 PG. 7

SEE PAGE FOUR

LOT LINE 1



SEE PAGE SEVEN

162-586  
145-510  
125-825  
34-259  
83-159  
11-25  
42-682

CEMETERY

E. HIGH ST. 66'

SEE PAGE TWELVE



SCALE 1"=66'

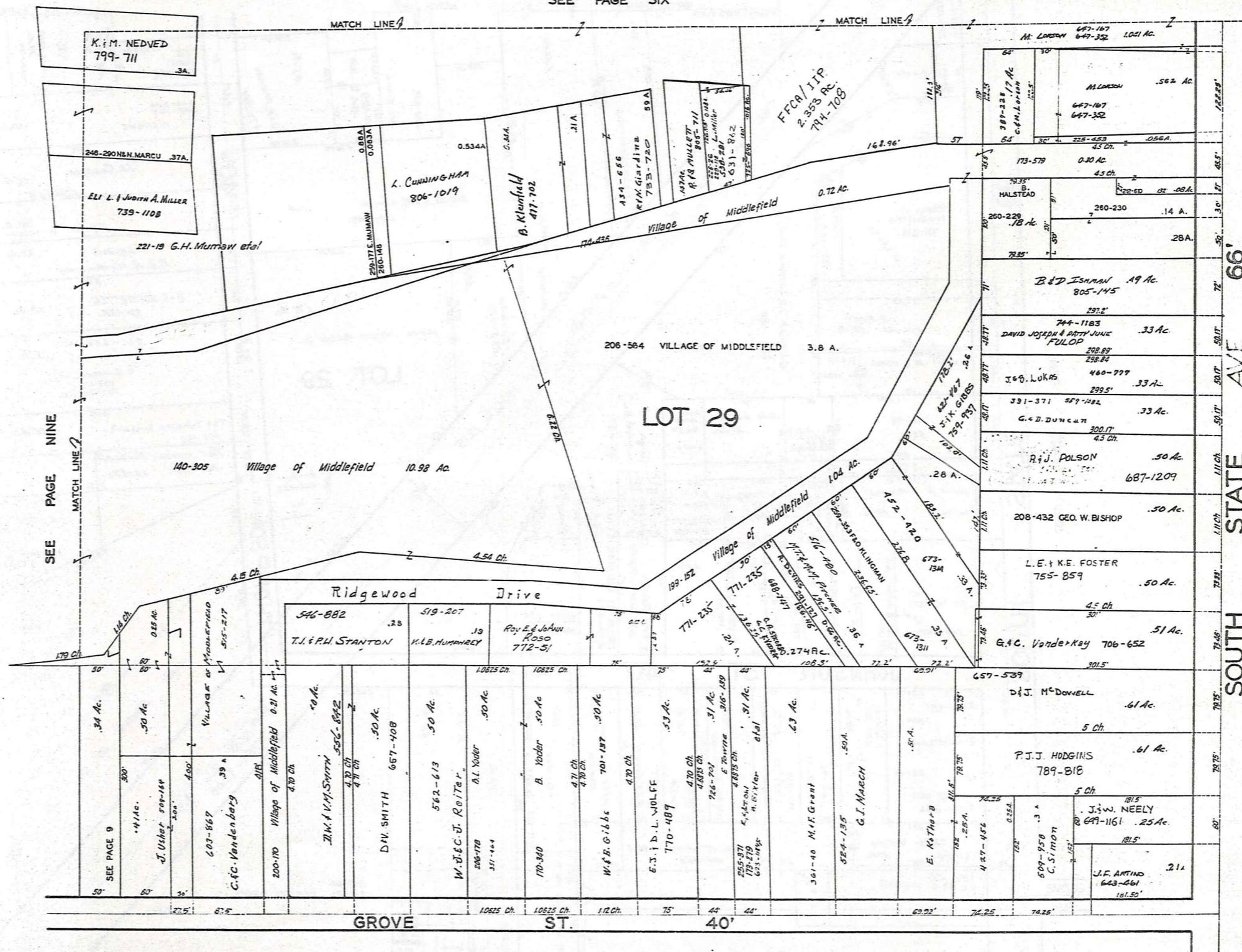
JAN. 1, 1989

RELATIVE REPRESENTATION

MIDDLEFIELD VILLAGE

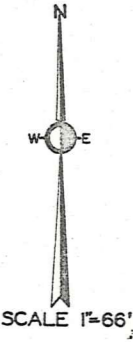


SEE PAGE SIX



SEE PAGE NINE

SEE PAGE ELEVEN

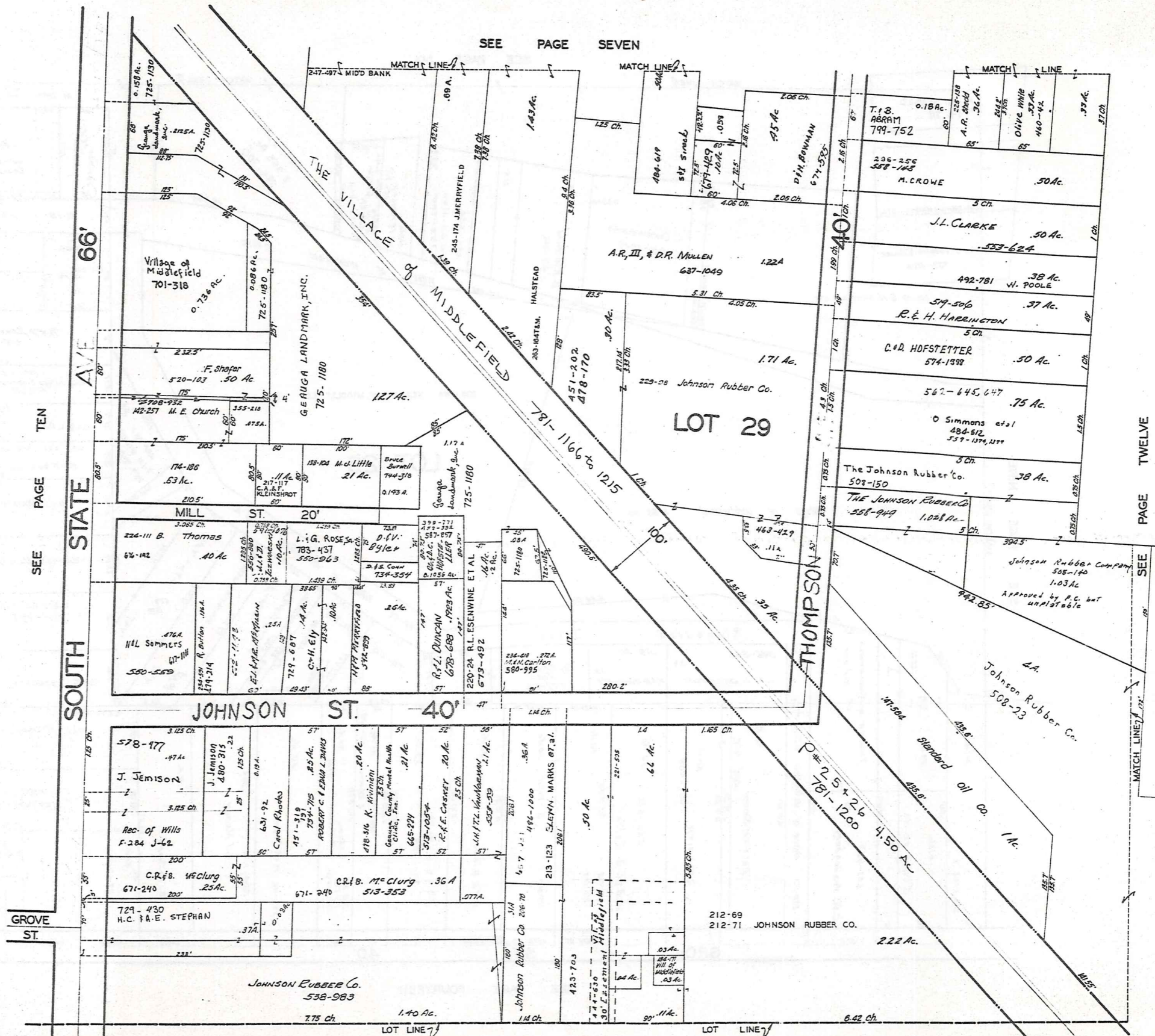


SCALE 1"=66'

JAN. I, 1989

SEE PAGE FOURTEEN

RELATIVE REPRESENTATION



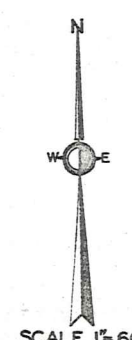
SEE PAGE TEN

SOUTH STATE AVE 66'

SEE PAGE SEVEN

SEE PAGE FIFTEEN

PAGE TWELVE



SCALE 1"=66'  
JAN. 1, 1989

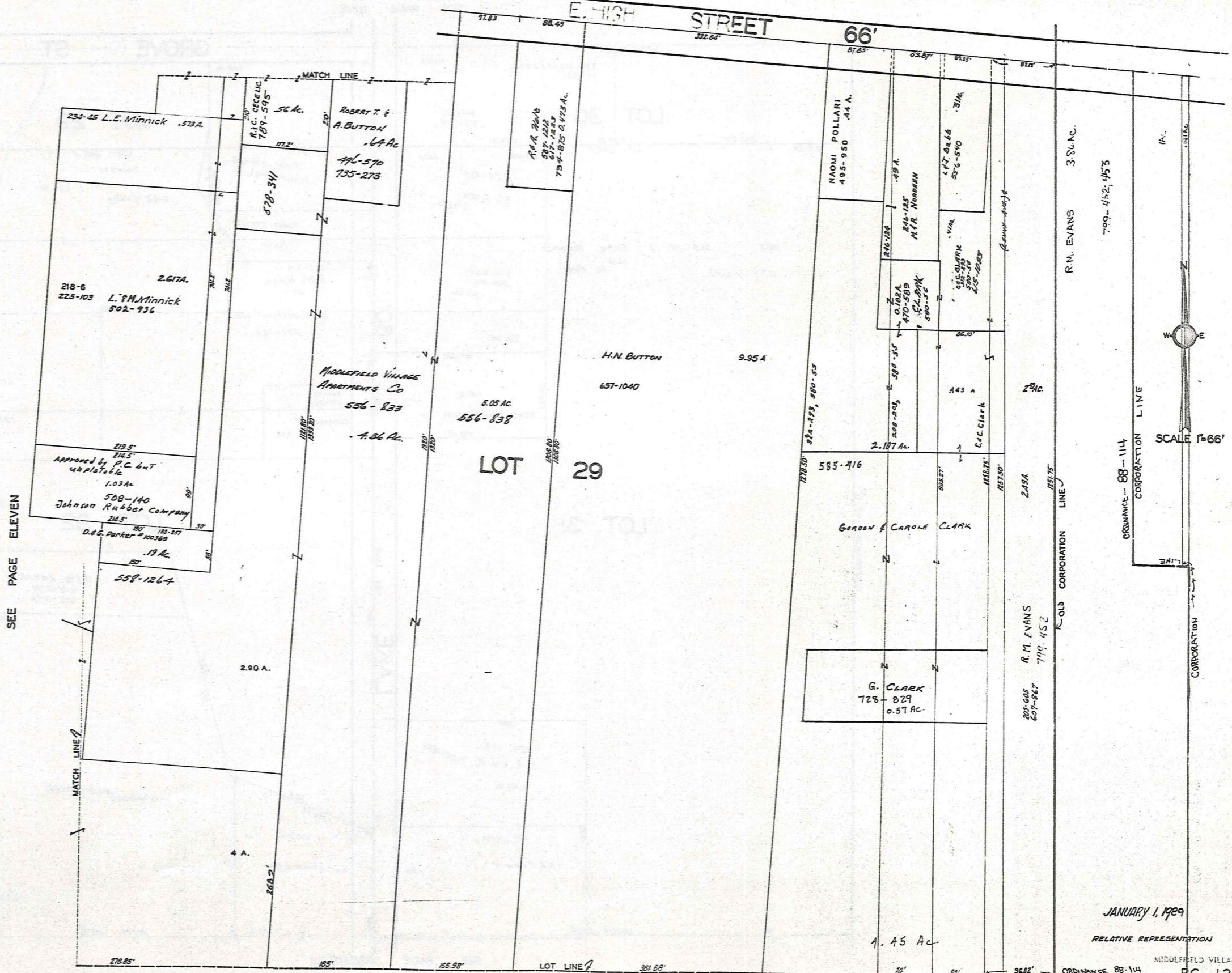
RELATIVE REPRESENTATIONAL  
MIDDLEFIELD VILLAGE  
PG. 11

MIDDLEFIELD VILLAGE

SEE PAGE EIGHT

E. HIGH STREET

66'



SCALE 1"=66'

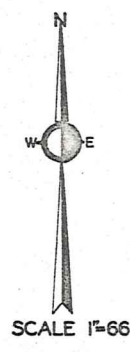
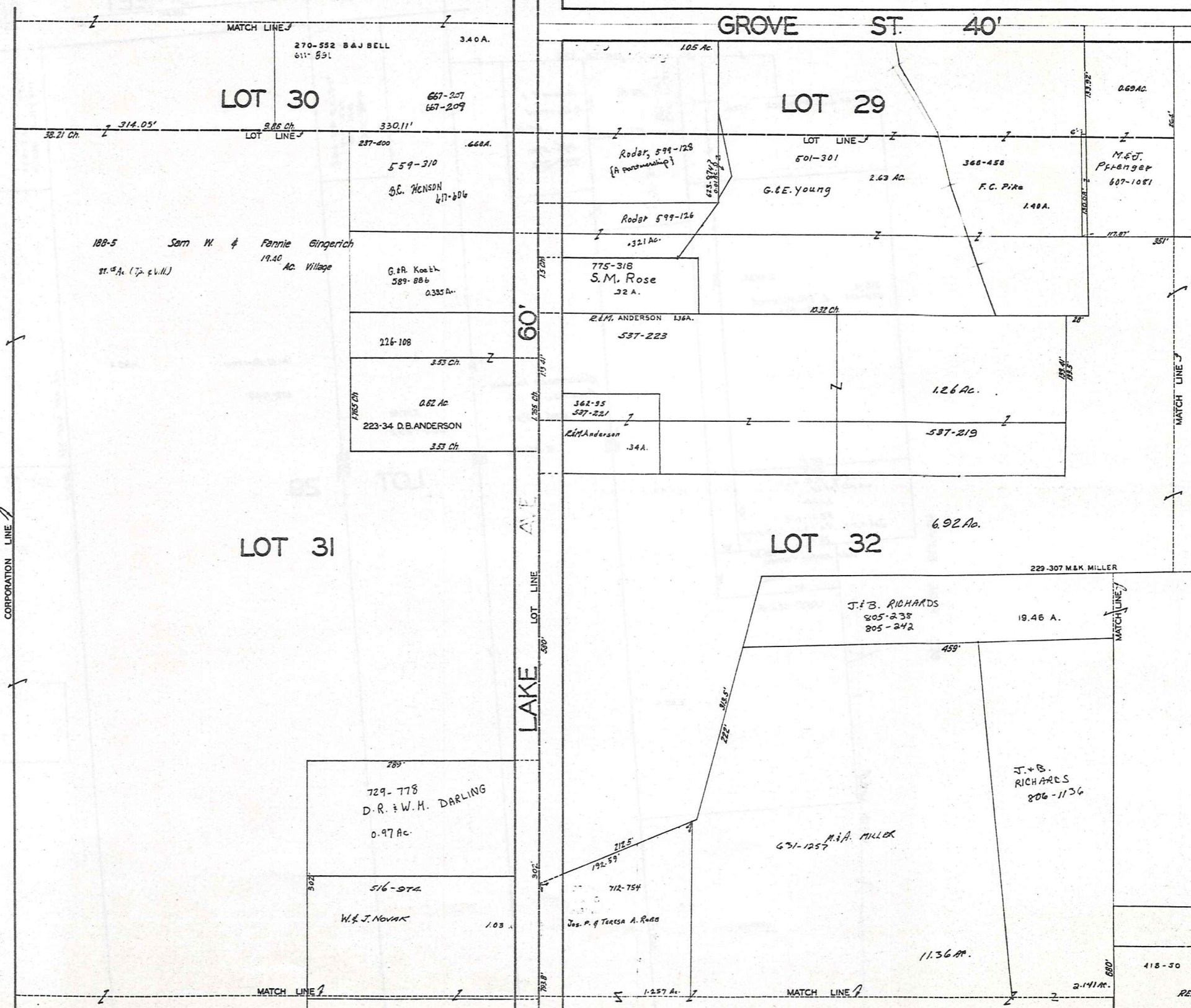
JANUARY 1, 1929

RELATIVE REPRESENTATION

ORDINANCE 88-114 CORPORATION LINE

MIDDLEFIELD VILLAGE

SEE PAGE NINE



JAN. 1, 1989

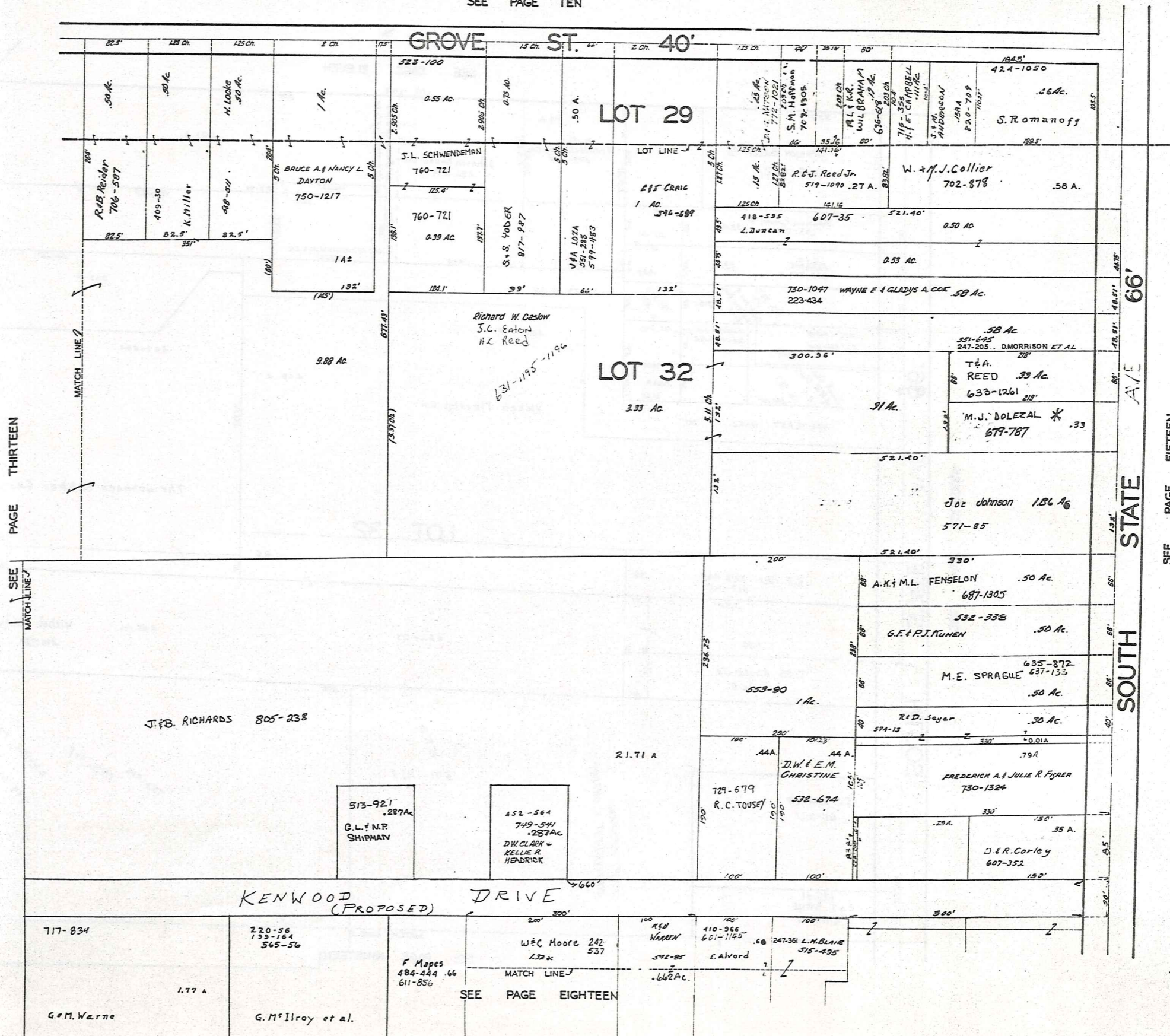
SEE PAGE FOURTEEN

SEE PAGE SEVENTEEN

418-50  
 RELATIVE REPRESENTATION  
 MIDDLEFIELD VILLAGE  
 PG. 13  
 G. & M. Warner  
 177 A

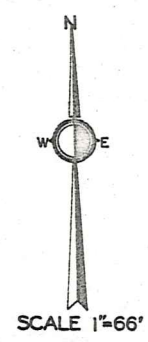
MIDDLEFIELD VILLAGE

SEE PAGE TEN



PAGE THIRTEEN

SEE PAGE FIFTEEN

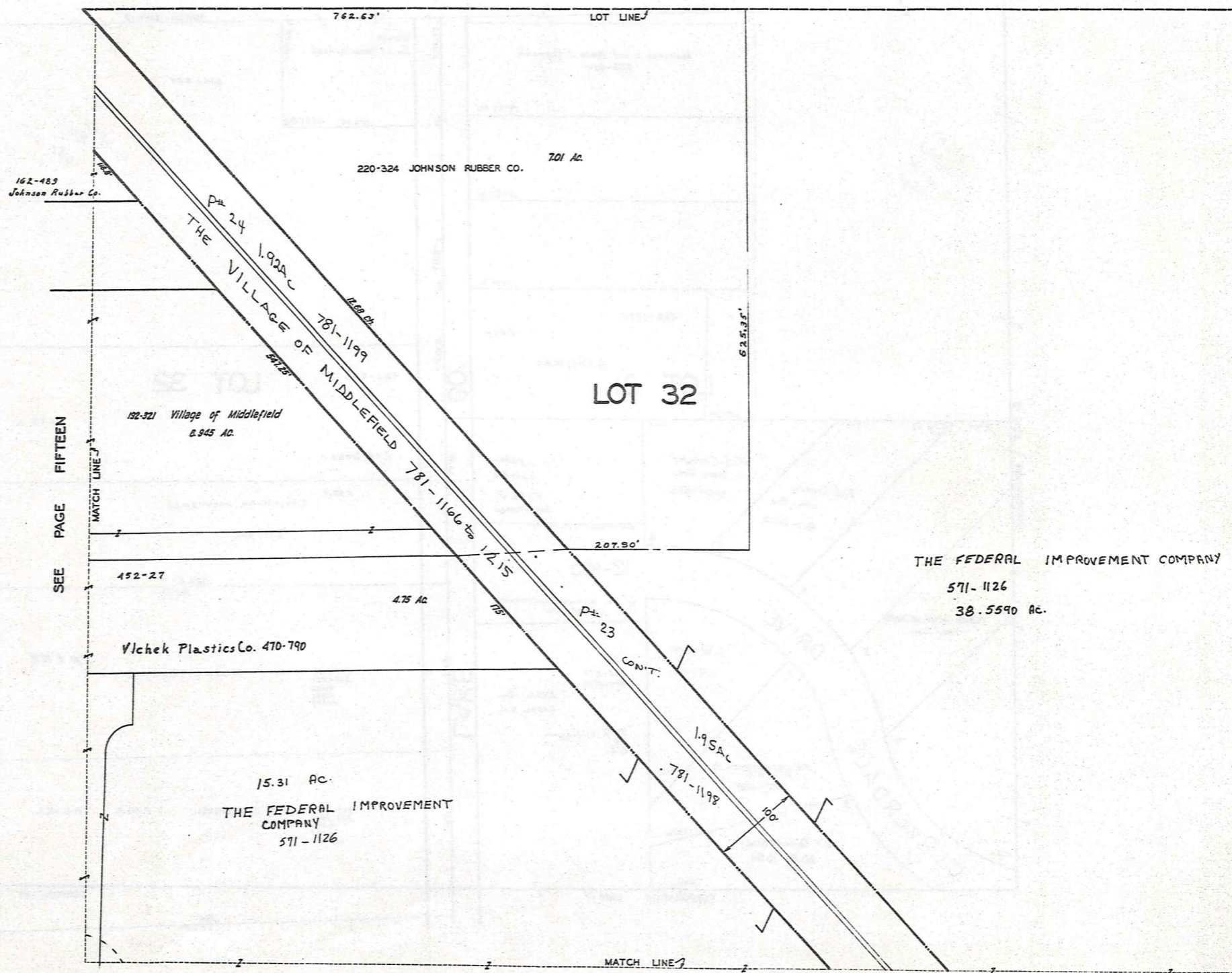


JAN. 1, 1989

RELATIVE REPRESENTATION

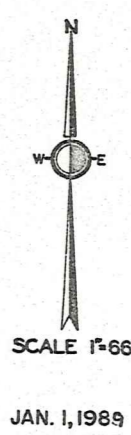


SEE PAGE TWELVE



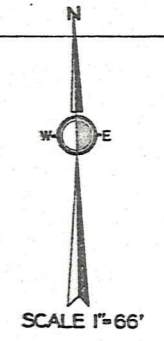
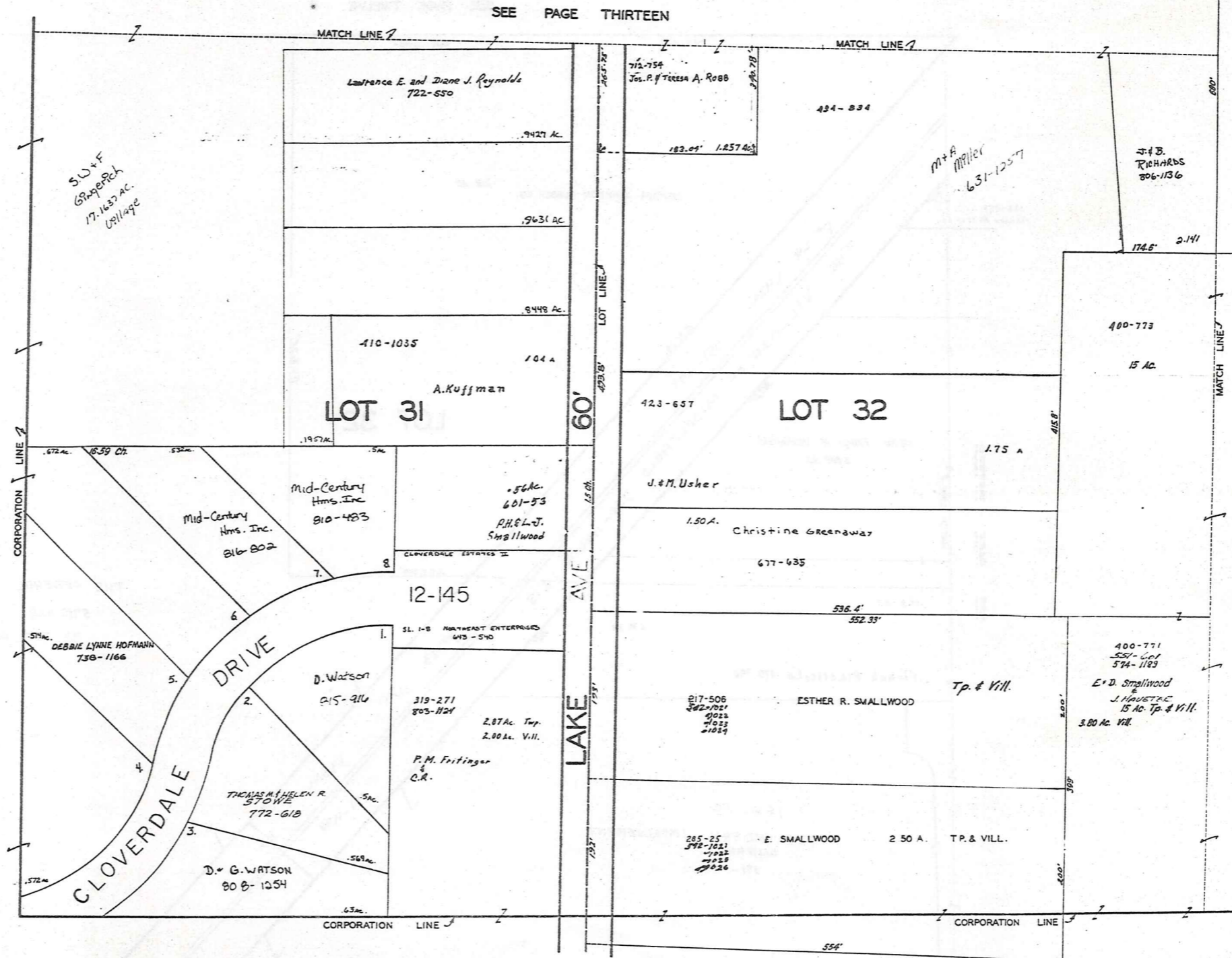
SEE PAGE FIFTEEN

SEE PAGE 21



SEE PAGE TWENTY

RELATIVE REPRESENTATION



KENWOOD

418-50

1.77 A

J. P. RICHARDS  
806-1136

174.5' 2.14'

400-773

15 Ac.

712-754  
JOS. P. RICHARDS A. ROBB

434-834

M. A. Miller  
651-1257

410-1035

1.04 A

A. Kuffman

LOT 31

423-657

LOT 32

1.75 A

J. M. Usher

1.50 A.

Christine Greenaway

677-635

12-145

SL. 1-B NORTHEAST ENTERPRISES  
643-540

D. Watson  
815-916

319-271  
805-1124

2.87 Ac. Twp.  
2.00 Ac. Vill.

P. M. Feitinger  
& C.R.

THOMAS M. HELEN R.  
STOWE  
772-618

D. G. WATSON  
808-1254

817-506  
562-2021  
4022  
71033  
21029

ESTHER R. SMALLWOOD

Tp. & Vill.

400-771  
551-001  
574-1183  
E. D. Smallwood  
& J. HANCOCK  
15 Ac. Tp. & Vill.  
3.80 Ac. Vill.

285-25  
598-1021  
1922  
71033  
21029

E. SMALLWOOD

2.50 A. T.P. & VILL.

SEE PAGE EIGHTEEN

SEE PAGE THIRTEEN

MATCH LINE

MATCH LINE

CORPORATION LINE

CORPORATION LINE

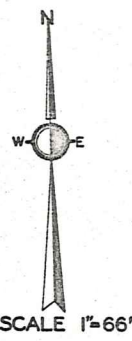
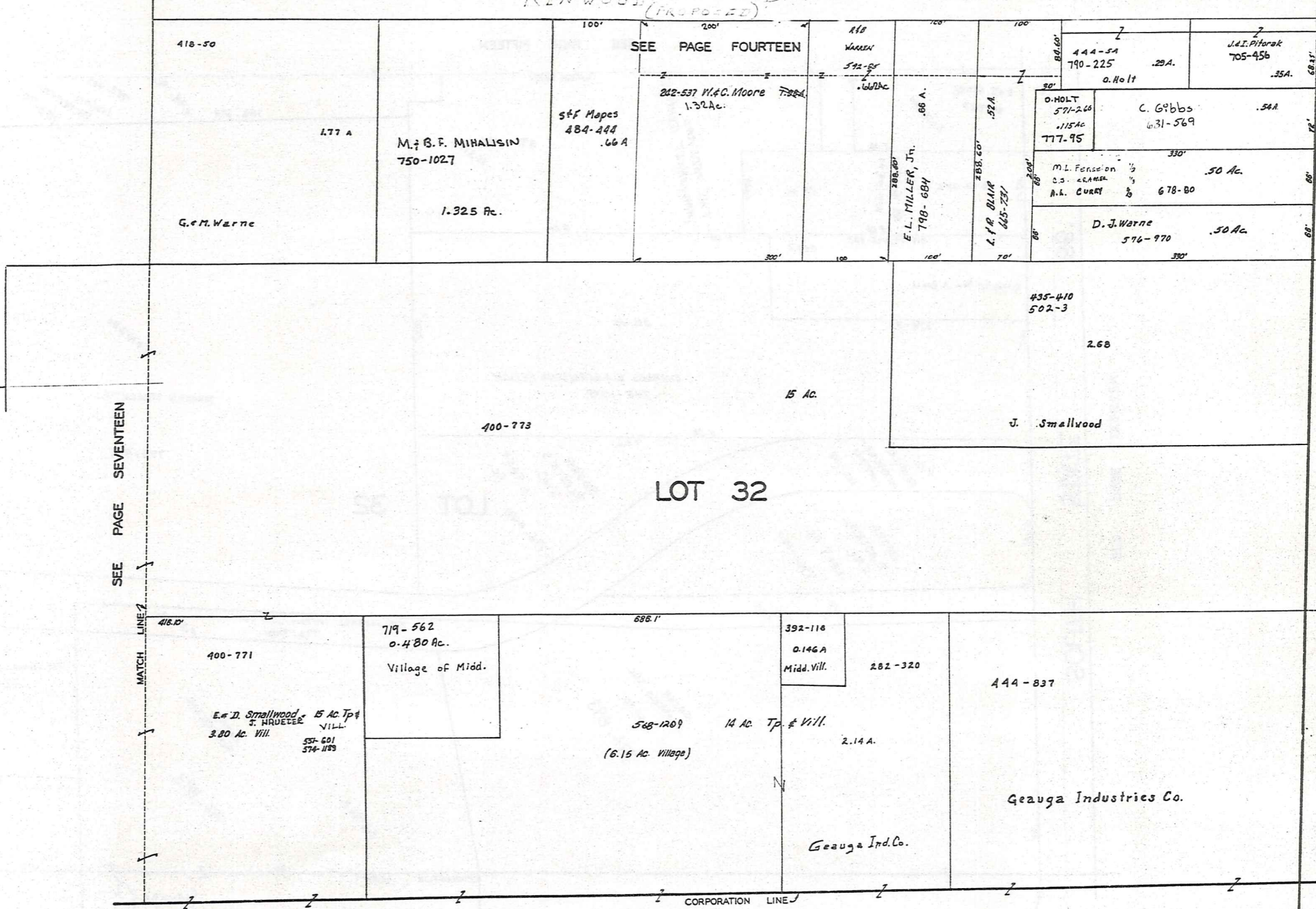
CORPORATION LINE

LAKE AVE

CLOVERDALE DRIVE

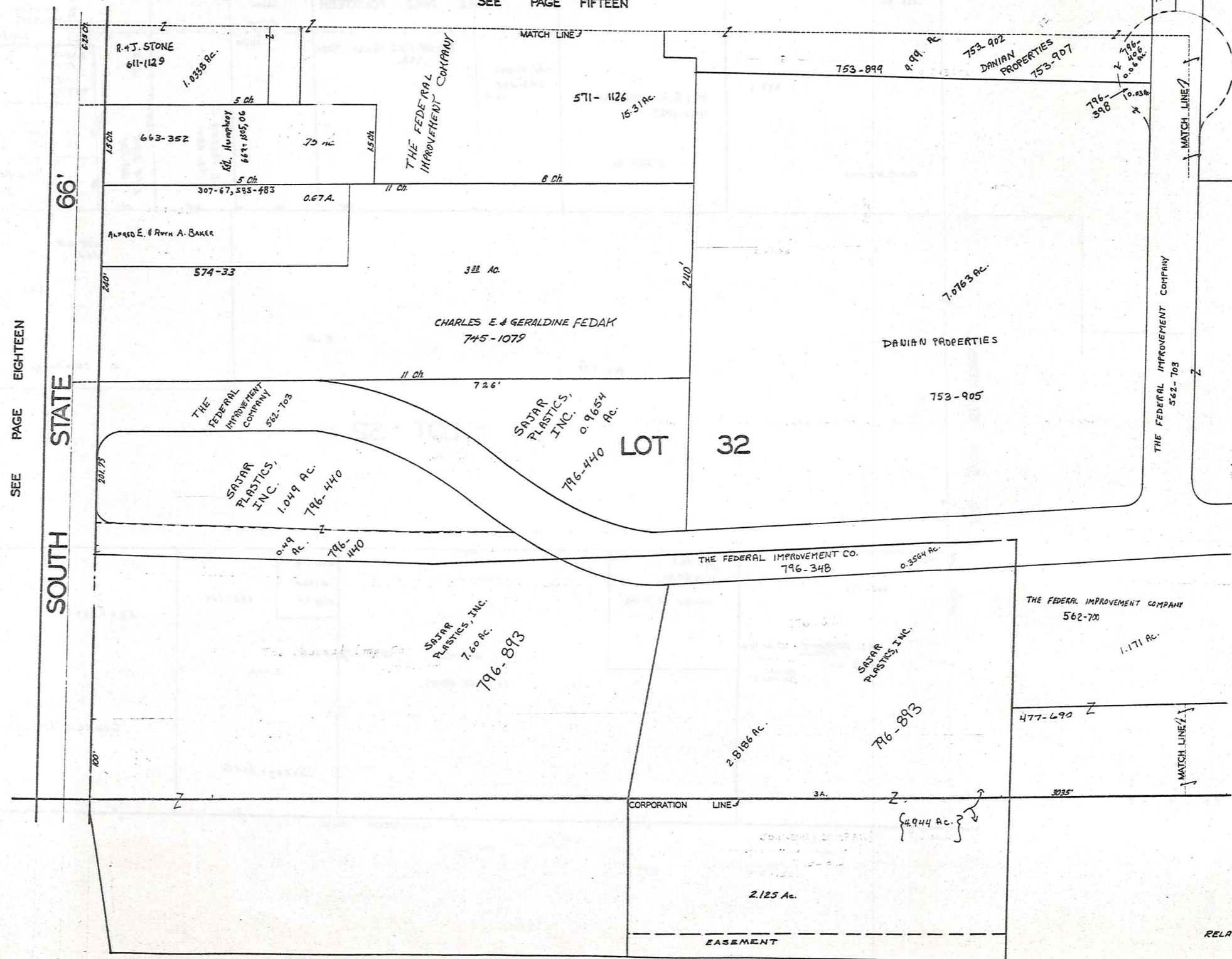
JANUARY 1, 1989  
RELATIVE REPRESENTATION

KENWOOD (PROPOSED) DRIVE 50'



MIDDLEFIELD VILLAGE

SEE PAGE FIFTEEN



SEE PAGE EIGHTEEN

SOUTH STATE 66'

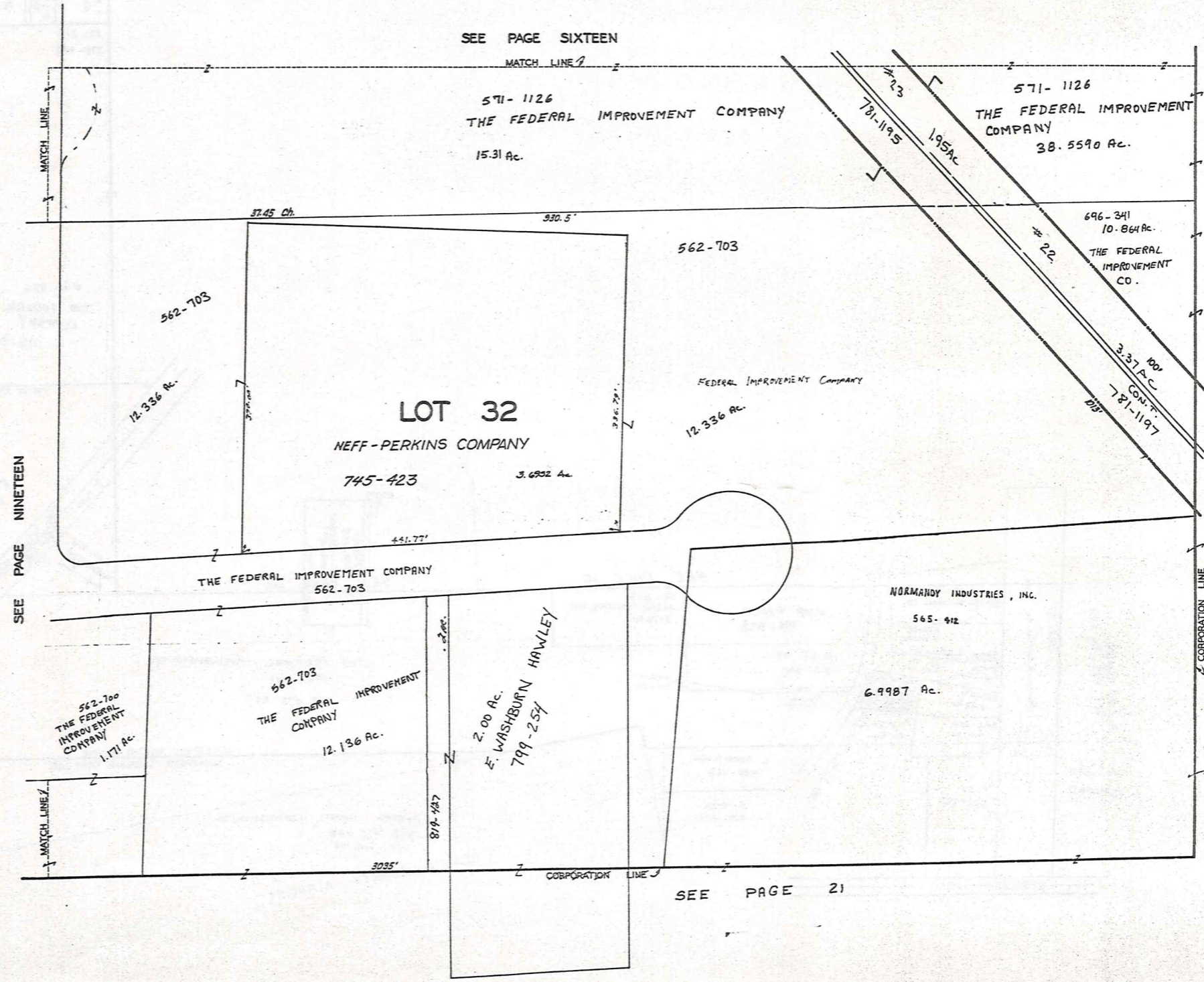
SEE PAGE TWENTY



SCALE 1"=66'

JAN. 1, 1989

RELATIVE REPRESENTATION

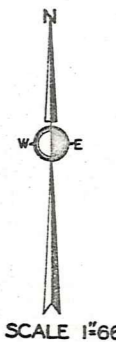


SEE PAGE NINETEEN

SEE PAGE SIXTEEN

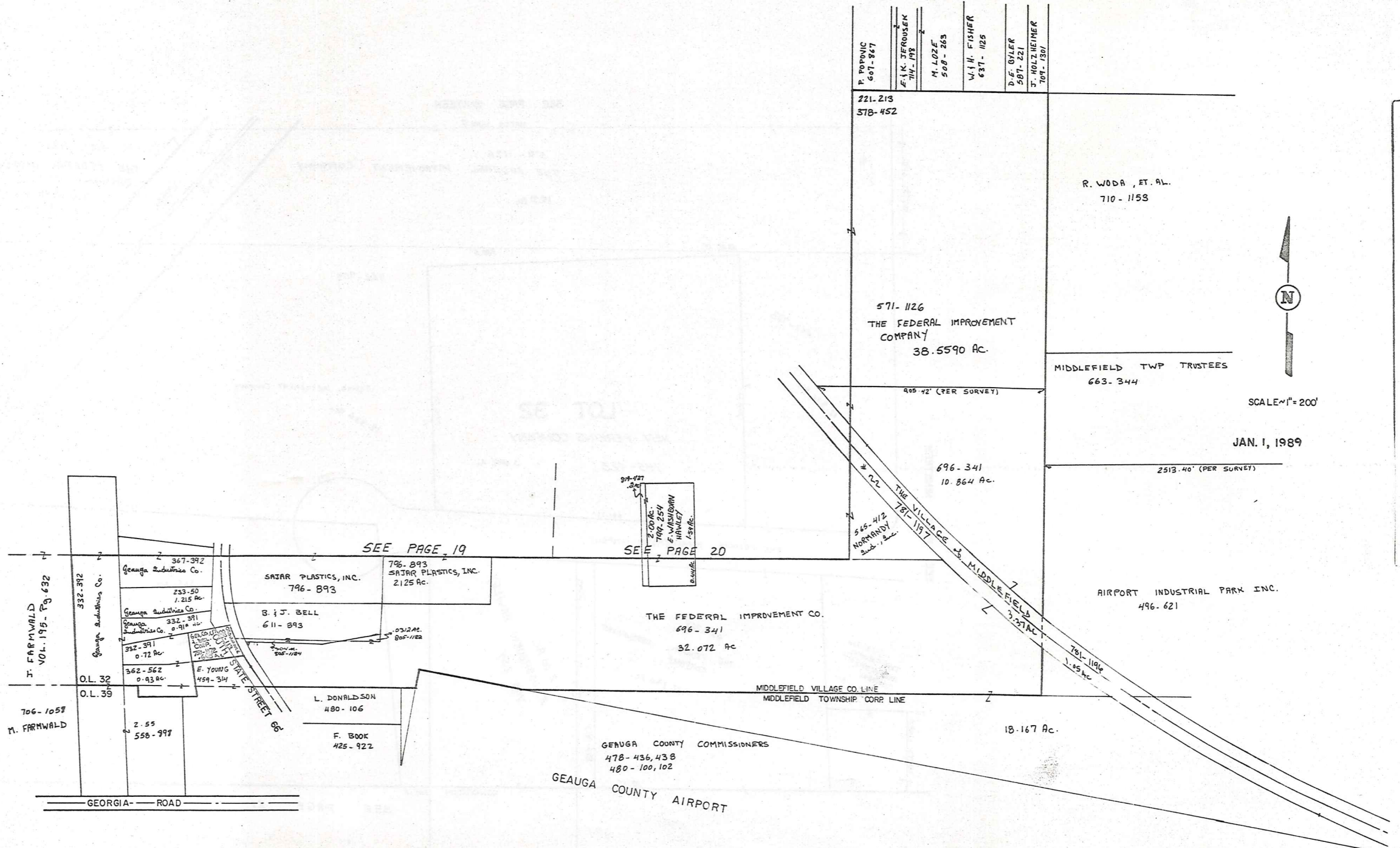
SEE PAGE 21

SEE PAGE 21



JAN 1, 1989

MIDDLEFIELD VILLAGE



SCALE 1" = 200'

JAN. 1, 1989

SEE PAGE 19

SEE PAGE 20

MIDDLEFIELD VILLAGE

RELATIVE REPRESENTATION



W. WALDEN

653-744; 745  
693-670  
BAK DEVELOPMENT CO.  
PARCEL #2

142-335  
5.0 Ac.  
G. WILLIAMS

20

693-670  
BAK DEVELOPMENT CO.  
PARCEL #2

VILLAGE OF  
MIDDLEFIELD  
502-110  
13.24 Ac.

512-528  
6.27 Ac.

501-141  
693-670  
BAK DEVELOPMENT CO.  
PARCEL #1  
83.447 Ac.

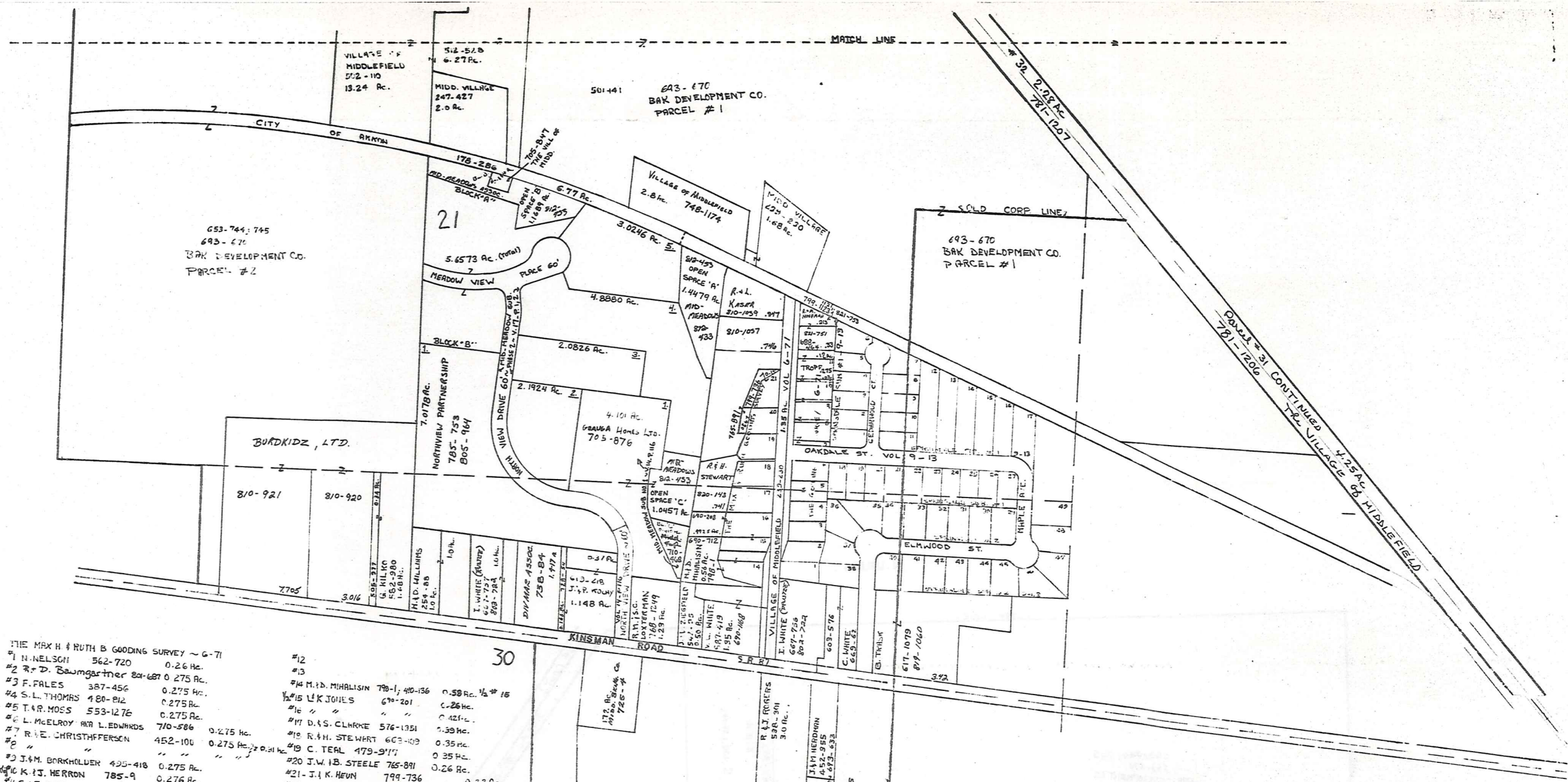


SCALE 1"=200'

JAN. 1, 1989

RELATIVE REPRESENTATION

MIDDLEFIELD VILLAGE  
PG. 22

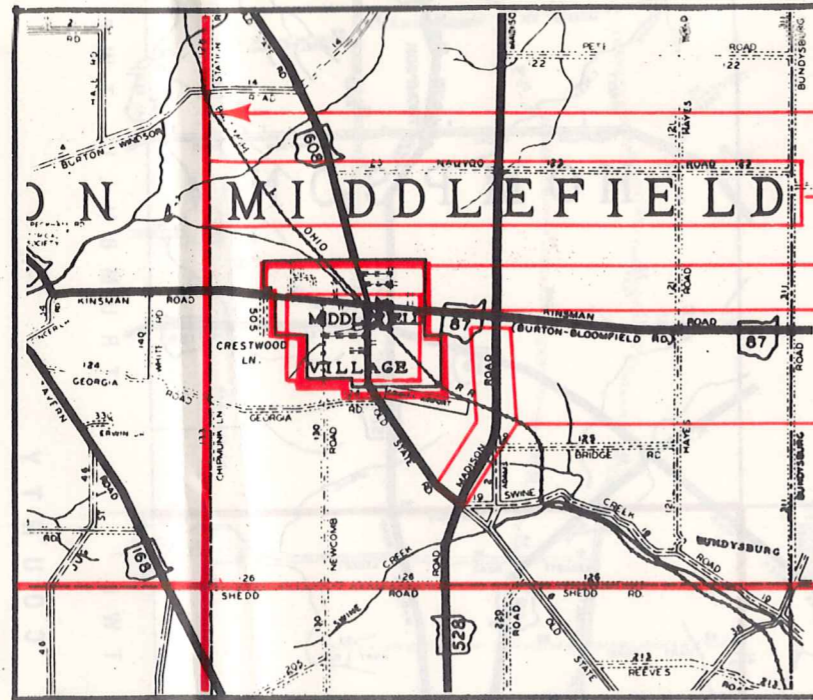


SCALE 1" = 200'  
 JAN. 1, 1989  
 RELATIVE REPRESENTATION

- |   |  |
|---|--|
| <p>THE MAX H &amp; RUTH B GOODING SURVEY ~ G-71</p> <p>#1 N. NELSON 562-720 0.26 Ac.</p> <p>#2 R. D. Baumgartner 824-687 0.275 Ac.</p> <p>#3 F. FALES 357-456 0.275 Ac.</p> <p>#4 S. L. THOMAS 480-812 0.275 Ac.</p> <p>#5 T. R. MOSS 553-1276 0.275 Ac.</p> <p>#6 L. McELROY AND L. EDWARDS 710-586 0.275 Ac.</p> <p>#7 R. E. CHRISTOFFERSON 452-100 0.275 Ac.</p> <p>#8 " " " " " " " " " " " "</p> <p>#9 J. M. BORKHOLTER 425-418 0.275 Ac.</p> <p>#10 K. J. HERRON 785-9 0.276 Ac.</p> <p>#11 G. J. TROFF 495-250 0.275 Ac. (734-289)</p> <p>SPRINGDALE SUBDIVISION NO. 1 &amp; NO. 2</p> <p>#1 D. M. PAXTON 705-721 0.247 Ac.</p> <p>#2 K. QUILLEN 550-892 0.25 Ac.</p> <p>#3 P. L. WISMAN 795-31; 537-644 0.25 Ac.</p> <p>#4 S. M. KOZENKO 809-205 0.25 Ac.</p> <p>#5 G. W. &amp; B. J. WILKES 537-635 0.235 Ac.</p> <p>#6 C. &amp; N. LANGHAM 562-906 0.293 Ac.</p> <p>#7 A. &amp; M. SATTERLEE 815-442 0.247 Ac.</p> <p>#8 G. FULOP 780-739 0.282 Ac.</p> <p>#9 R. D. BARCZKOWSKI 537-924 0.250 Ac.</p> <p>#10 G. &amp; J. E. TROFF 734-289 0.03 Ac.</p> <p>#11 R. E. STEWART 522-722 0.247 Ac.</p> <p>#12 E. E. SELBY 484-600 0.580 Ac.</p> <p>#13 M. E. BRILLA &amp; Co. 485-54 0.524 Ac.</p> <p>#14 W. B. OSMOND 576-1033 0.468 Ac.</p> <p>#15 G. H. BURRIS 657-893 0.332 Ac.</p> <p>#16 Nancy L. SHANNON 722-644 0.283 Ac.</p> <p>#17 R. J. WEINER 813-1031 0.283 Ac.</p> <p>#18 T. L. V. McKENNEY 351-201 0.293 Ac.</p> <p>#19 W. &amp; K. BLUE 591-1090 0.283 Ac.</p> <p>#20 R. D. KLEPPER 593-722 0.282 Ac.</p> <p>#21 K. E. FERREY 551-256 0.335 Ac.</p> <p>#22 B. MAZZONE 551-181 0.342 Ac.</p> <p>#23 D. M. MARES 775-1109 0.332 Ac.</p> <p>#24 R. S. PETRICK 661-337 0.333 Ac.</p> | <p>#12</p> <p>#13</p> <p>#14 M. D. MIHALISIN 790-1; 410-36 0.58 Ac. 1/2 # 15</p> <p>#15 L. K. JONES 670-201 0.26 Ac.</p> <p>#16 " " " " " " " " " " " "</p> <p>#17 D. S. CLARKE 576-1351 0.421 Ac.</p> <p>#18 R. H. STEWART 603-109 0.39 Ac.</p> <p>#19 C. TERL 479-917 0.35 Ac.</p> <p>#20 J. W. B. STEELE 765-891 0.26 Ac.</p> <p>#21 J. K. HEUN 799-736 0.23 Ac.</p> <p>#22 R. L. KASER 524-33 0.37 Ac.</p> <p>#15 W. B. OSMOND 576-1032 0.412 Ac.</p> <p>#16 M. M. MALLISKI 791-650 0.356 Ac.</p> <p>#17 R. DeMARCO 493-1276 0.373 Ac.</p> <p>#18 D. C. Hersh 810-243 0.237 Ac.</p> <p>#19 R. J. M. DEWEILER 582-226 0.250 Ac.</p> <p>#20 " " " " " " " " " " " "</p> <p>#21 E. C. Ziegler 702-551 0.250 Ac.</p> <p>#22 J. D. SMITH 617-728 0.250 Ac.</p> <p>#23 L. G. L. EIERMANN 523-303 0.250 Ac.</p> <p>#24 B. R. HATCH 713-222 0.250 Ac.</p> <p>#25 M. BARLOW 537-1047 0.250 Ac.</p> <p>#26 M. M. PFENEGEE 537-1097 0.237 Ac.</p> <p>#27 J. L. F. V. MILLER 537-672 0.249 Ac.</p> <p>#28 W. R. L. W. CANTERBURY 522-412 0.335 Ac.</p> <p>#29 J. BRUCE 663-711 0.281 Ac.</p> <p>#30 R. P. FISHER 500-490 0.280 Ac.</p> <p>#31 C. J. BRUSHAM 551-574 0.279 Ac.</p> <p>#32 R. J. W. L. M. Co. 617-541 0.237 Ac.</p> <p>#33 L. T. SCRIGGOL 551-672 0.332 Ac.</p> <p>#34 J. W. H. M. BLANUS 551-540 0.330 Ac.</p> <p>#35 R. A. H. BRAUN 536-1077 0.357 Ac.</p> <p>#36 D. A. HUPP 800-17 0.335 Ac.</p> <p>#37 W. J. SLY 766-771 0.334 Ac.</p> |
|---|--|

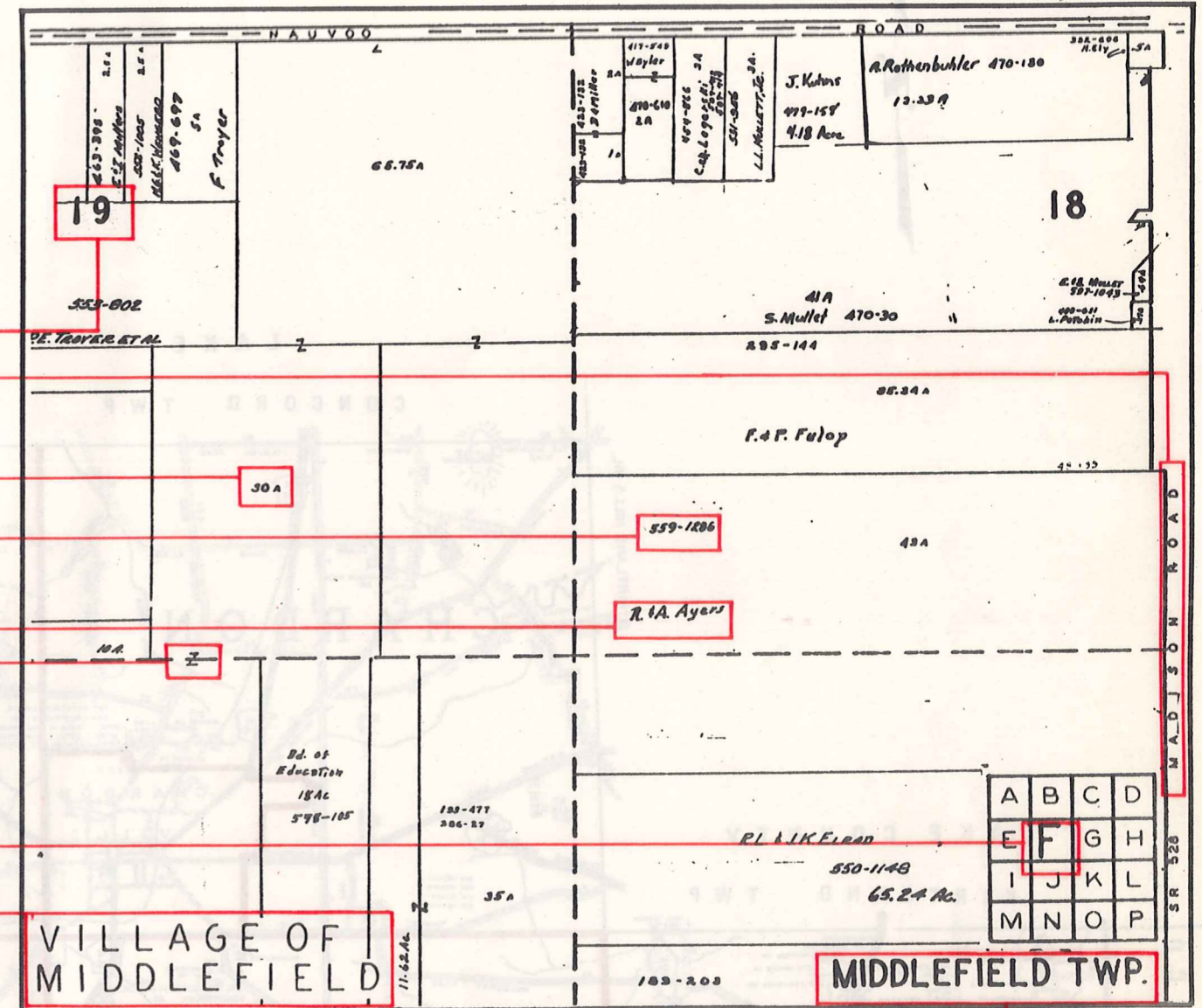
# Explanation and Use Sheet for Geauga County, Ohio

SAMPLE (PARTIAL) COUNTY INDEX MAP



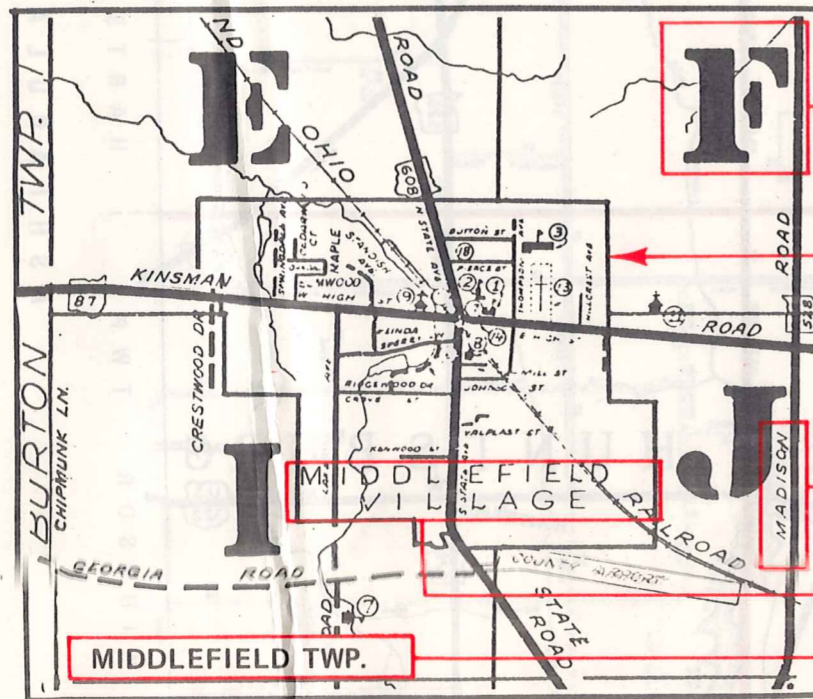
- Township Boundary
- Township Name
- Village Boundary
- Village Name
- Tract Lot Number
- Street Name
- Acreage
- Deed Book & Page
- Owners Name
- Denotes Continous Ownership

SAMPLE (PARTIAL) MAP PAGE



- Map Page Number
- Village Name
- Village Boundary
- Township Name

SAMPLE (PARTIAL) MUNICIPALITY INDEX MAP



- Street Name
- Village Name
- Township Name

## USE OF THE MAP VOLUME

1. LOCATE THE GENERAL AREA OF INTEREST ON THE COUNTY INDEX MAP, ATLAS PAGE 'B', AND NOTE THE MUNICIPALITY NAME (TOWNSHIP OR VILLAGE).
2. REFER TO THE TABLE OF CONTENTS, ATLAS PAGE 'C', AND NOTE THE BEGINNING ATLAS PAGE NUMBER FOR THE MUNICIPALITY OF INTEREST.
3. TURN TO THE PAGE INDICATED. ON THIS PAGE WILL APPEAR AN INDEX MAP FOR THAT MUNICIPALITY.
4. LOCATE THE GENERAL AREA OF INTEREST AND NOTE THE MAP PAGE NUMBER. THIS MAY BE EITHER A LETTER OR A NUMBER.
5. MAP PAGES ARE IN ALPHABETICAL (OR NUMERICAL) SEQUENCE FOLLOWING THE MUNICIPALITY INDEX MAP. FOLLOW SEQUENCE TO THE MAP PAGE INDICATED.
6. LOCATE SPECIFIC PARCEL OF INTEREST AND NOTE THE DESIRED INFORMATION.

NOTE: ON SOME MAPS YOU MAY BE REFERRED TO A DETAIL SHEET SHOWING AN ENLARGEMENT OF THE AREA. THESE MAPS ARE FOUND AT THE END OF THE REGULAR MAP PAGES IN EACH MUNICIPALITY IN EITHER ALPHABETICAL OR NUMERICAL SEQUENCE.

NOTE: CHARDON VILLAGE HAS TITLE SHEETS. TO LOCATE OWNERS NAME, NOTE THE PARCEL NUMBER, REFER TO THE TITLE PAGE FOLLOWING THE MAP OF INTEREST, FOLLOW NUMERICAL SEQUENCE TO THE PARCEL NUMBER OF INTEREST AND NOTE THE DESIRED INFORMATION. IN ALL OTHER MUNICIPALITIES THE OWNERS NAME APPEARS ON THE MAP PAGE.

This book is the property of REAL ESTATE DATA, INC. and is distributed by REDI under a leasing arrangement requiring return to REDI upon termination of the lease. REDI reserves the right to reclaim this book if found in the possession of any firm or person where possession was obtained through any unauthorized source.